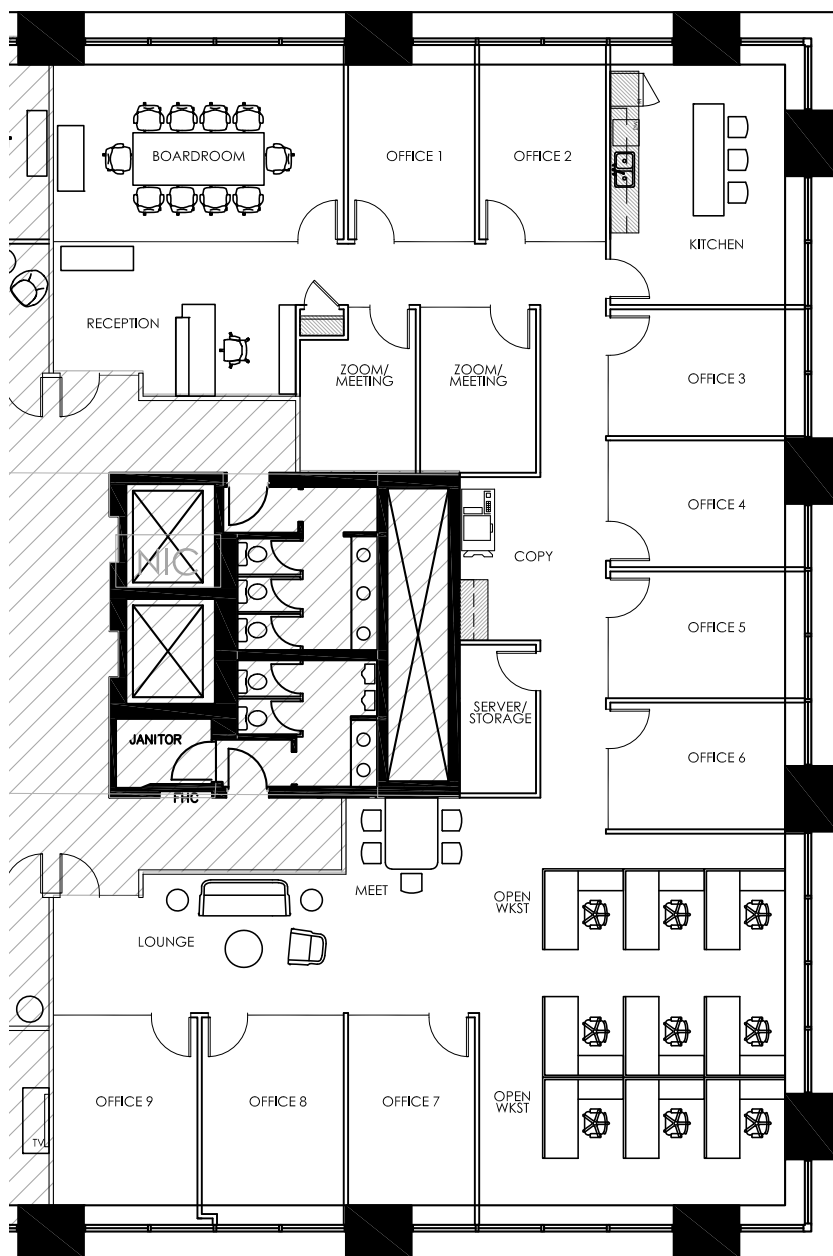


# YOUR FUTURE OFFICE

OXFORD

Leasing Opportunity at

## Bow Valley Square - I



Suite Details:

Tower  
Bow Valley Square I

Suite Number  
1430

Square Footage  
4,780

Further Information

[Bow Valley Square's Webpage](#)

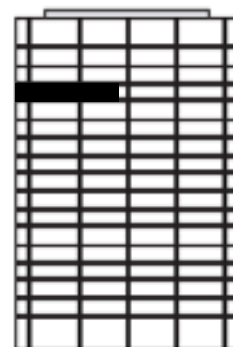
Website

[OxfordProperties.com](#)

Suite Description

- 9 perimeter offices,
- Open area for 8-10 workstations
- 10 person boardroom
- Two Zoom/meeting rooms
- Lounge
- Reception

Plan View of Your Suite,  
Suite 1430, Bow Valley Square I



Your Suite



Your Office Tower

# A workplace experience

designed for the way  
you live



**7:00 AM**

Get energized with a BVS Peloton bike workout in our convenient on-site fitness centre



**8:15 AM**

Fuel your morning with a steaming #alogs brew, then let the creative juices flow in your clean, bright workspace

**12:00 PM**

Grab a BVS picnic blanket and lunch from Holy Grill for a restorative lunch in the sun



**3:00 PM**

Take a 15-minute brain break with some ping-pong on the rooftop patio



**4:30 PM**

Head out to Wine Not Wednesday at the BVS tenant HUB and meet your neighbours

# Bow Valley Square

Curated for work and life

OXFORD