

YOUR FUTURE OFFICE



Leasing Opportunity at

Bow Valley Square - I

Suite Details:

Tower
Bow Valley Square I

Suite Number
550

Square Footage
3,732

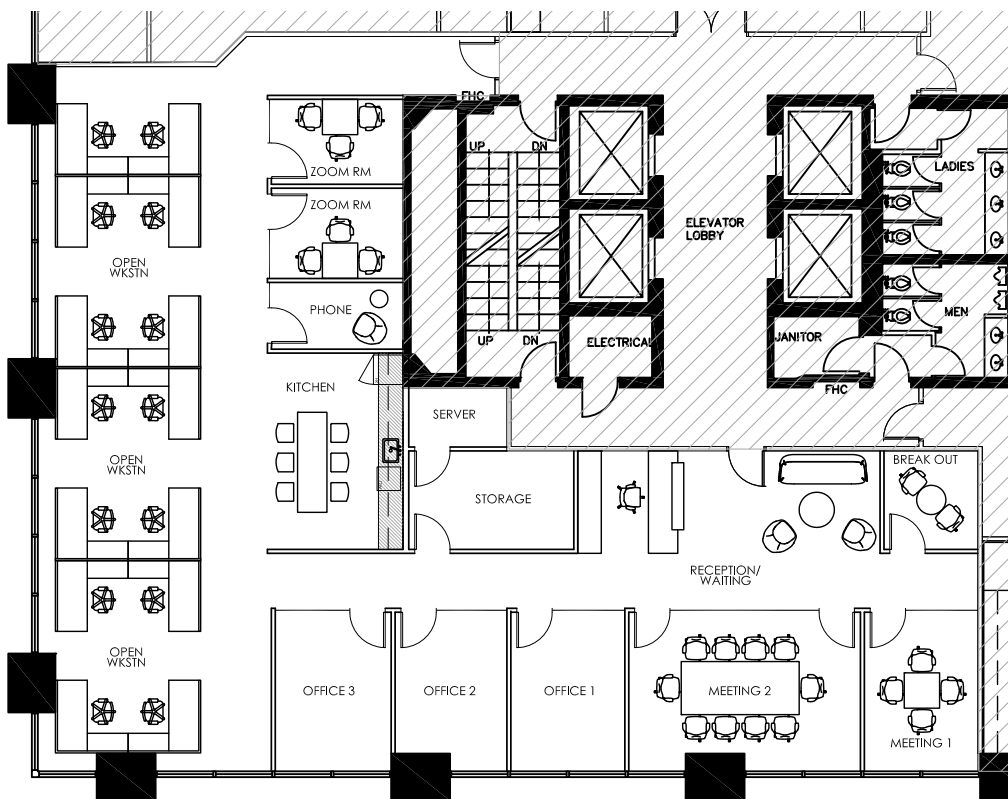
Further Information
[Bow Valley Square's Webpage](#)

Website
[OxfordProperties.com](#)

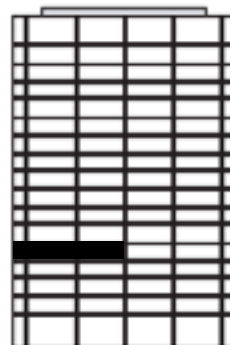
[Virtual Tour](#)

Suite Description

- 4 offices
- 10 person boardroom
- Open area for 12-14 workstations
- Open concept kitchen
- 2 Zoom rooms
- 1 phone room



Plan View of Your Suite,
Suite 550, Bow Valley Square I



Your Suite



Your Office Tower

A workplace experience

designed for the way
you live



7:00 AM

Get energized with a BVS Peleton bike workout in our convenient on-site fitness centre



8:15 AM

Fuel your morning with a steaming #alog brew, then let the creative juices flow in your clean, bright workspace

12:00 PM

Grab a BVS picnic blanket and lunch from Holy Grill for a restorative lunch in the sun



3:00 PM

Take a 15-minute brain break with some ping-pong on the rooftop patio



4:30 PM

Head out to Wine Not Wednesday at the BVS tenant HUB and meet your neighbours

Bow Valley Square

Curated for work and life

OXFORD