

# YOUR FUTURE OFFICE

OXFORD

Leasing Opportunity at

## Bow Valley Square - II

Suite Details:

Tower  
Bow Valley Square II

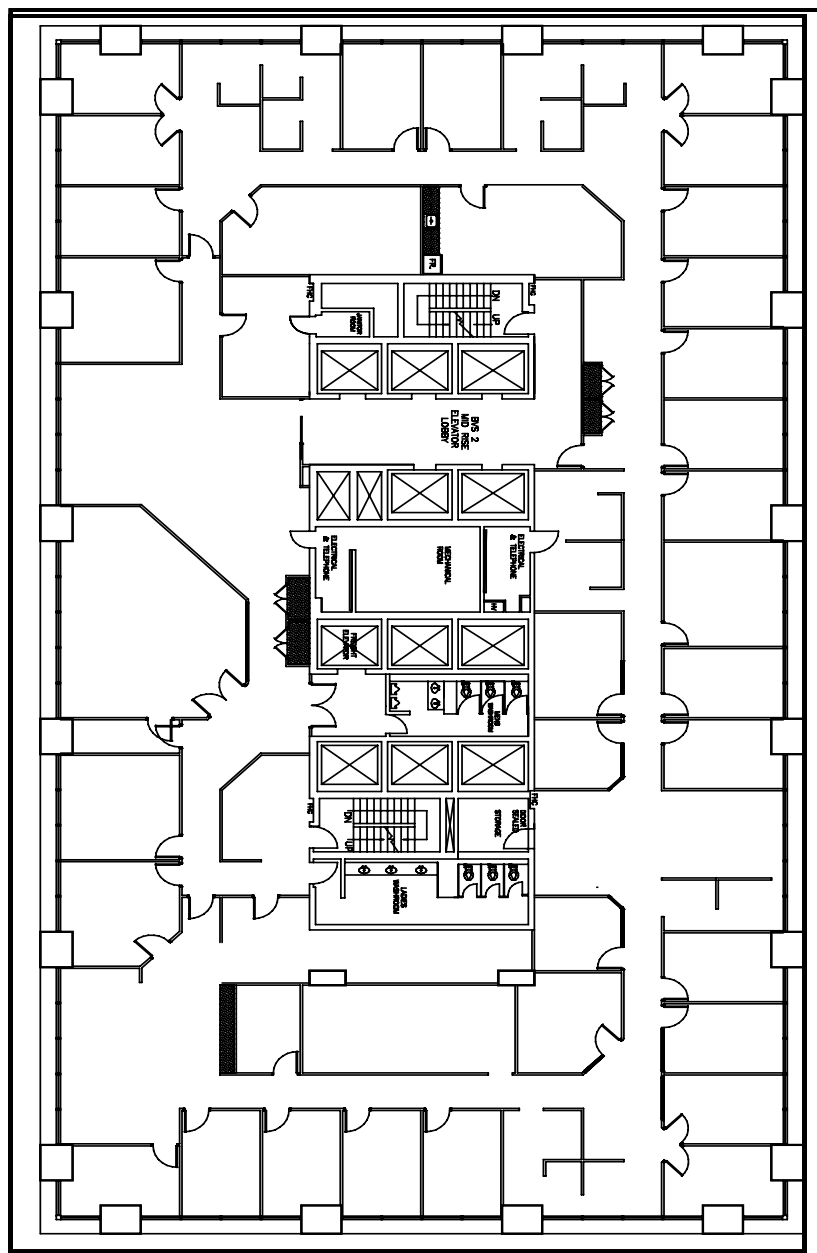
Suite Number  
1600

Square Footage  
13,560

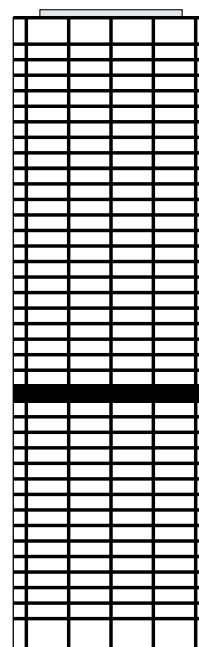
Further Information  
[Bow Valley Square's Webpage](#)

Website  
[OxfordProperties.com](#)

- Suite Description
- Full floor opportunity
  - 26 exterior offices
  - Two meeting rooms
  - Large boardroom
  - Open area for 16 workstations
  - Kitchen, storage and copy area



Plan View of Your Suite,  
Suite 1600, Bow Valley Square II



Your Suite



Your Office Tower

# A workplace experience

designed for the way  
you live



**7:00 AM**

Get energized with a BVS Peloton bike workout in our convenient on-site fitness centre



**8:15 AM**

Fuel your morning with a steaming #alog brew, then let the creative juices flow in your clean, bright workspace



**12:00 PM**

Grab a BVS picnic blanket and lunch from Holy Grill for a restorative lunch in the sun



**3:00 PM**

Take a 15-minute brain break with some ping-pong on the rooftop patio



**4:30 PM**

Head out to Wine Not Wednesday at the BVS tenant HUB and meet your neighbours

# Bow Valley Square

Curated for work and life

OXFORD