

YOUR FUTURE OFFICE

OXFORD

Leasing Opportunity at

Bow Valley Square - IV

Suite Details:

Tower
Bow Valley Square IV

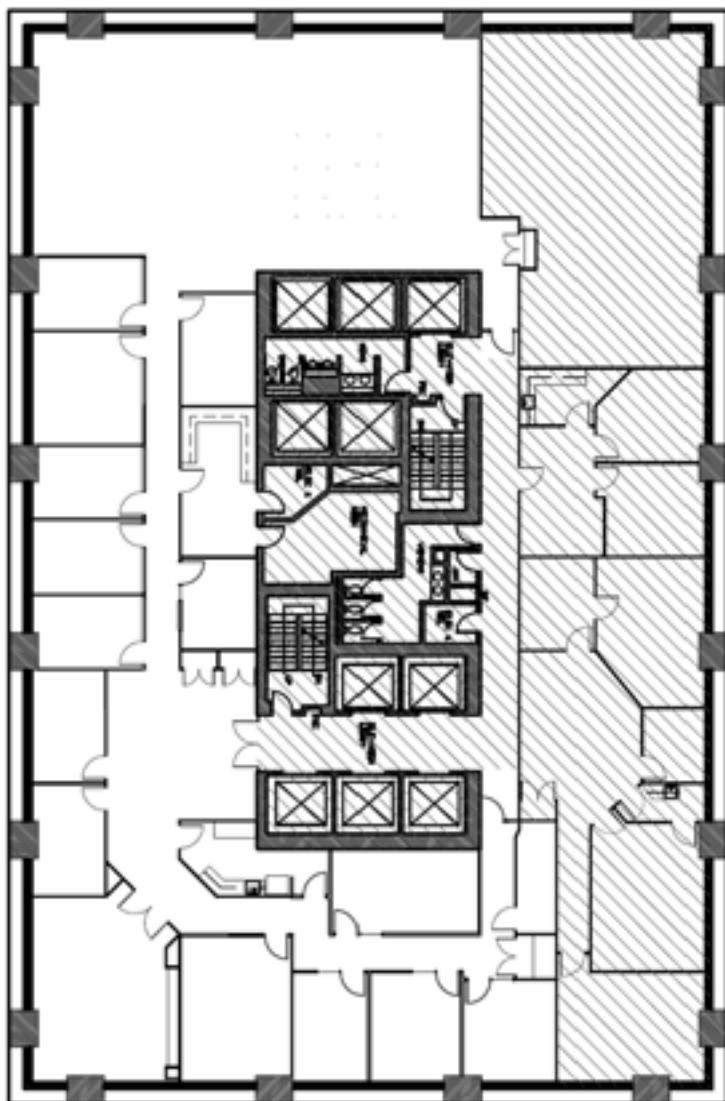
Suite Number
1600

Square Footage
7,575

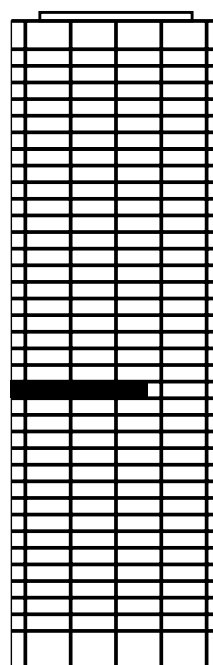
Further Information
[Bow Valley Square's Webpage](#)
Website
[OxfordProperties.com](#)

Suite Description

- Reception
- 8-10 exterior offices
- 2 interior offices
- Open area for 10-20 workstations
- 2-4 meeting rooms
- Kitchen
- Storage and copy area



Plan View of Your Suite,
Suite 1600, Bow Valley Square



Your Suite



Your Office Tower

A workplace experience

designed for the way
you live



7:00 AM

Get energized with a BVS Peleton bike workout in our convenient on-site fitness centre



8:15 AM

Fuel your morning with a steaming #alog brew, then let the creative juices flow in your clean, bright workspace



12:00 PM

Grab a BVS picnic blanket and lunch from Holy Grill for a restorative lunch in the sun



3:00 PM

Take a 15-minute brain break with some ping-pong on the rooftop patio



4:30 PM

Head out to Wine Not Wednesday at the BVS tenant HUB and meet your neighbours

Bow Valley Square

Curated for work and life

OXFORD