

YOUR FUTURE OFFICE

OXFORD

Leasing Opportunity at

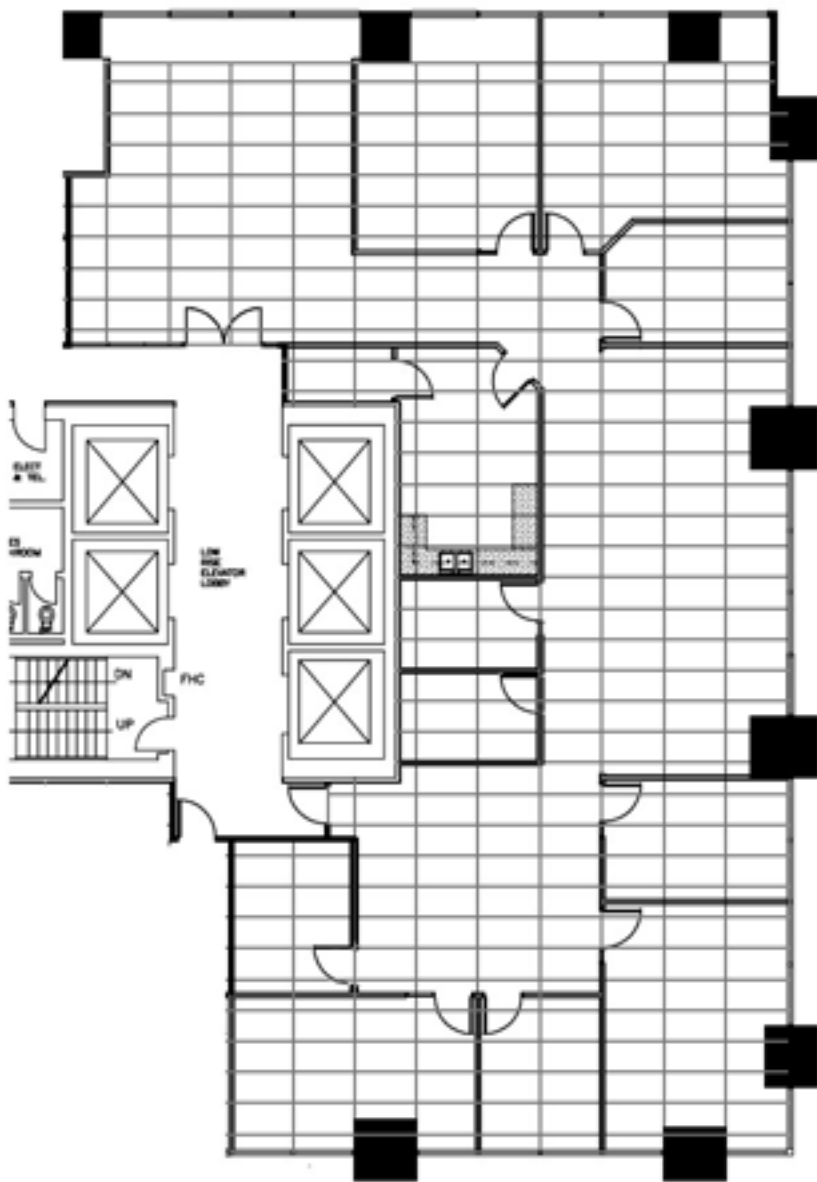
Bow Valley Square - IV

Suite Details:

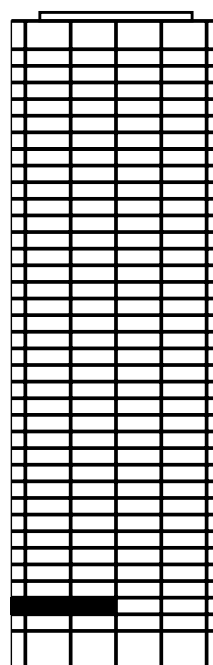
Tower
Bow Valley Square IV
Suite Number
310
Square Footage
4,900
Further Information
Bow Valley Square's Webpage
Website
OxfordProperties.com

Suite Description

- Reception
- 8 offices
- Kitchen
- Open area for 6-8 workstations
- Server and storage room



Plan View of Your Suite,
Suite 310, Bow Valley Square IV



Your Suite



Your Office Tower

A workplace experience

designed for the way
you live



7:00 AM

Get energized with a BVS Peleton bike workout in our convenient on-site fitness centre



8:15 AM

Fuel your morning with a steaming #alog brew, then let the creative juices flow in your clean, bright workspace



12:00 PM

Grab a BVS picnic blanket and lunch from Holy Grill for a restorative lunch in the sun



3:00 PM

Take a 15-minute brain break with some ping-pong on the rooftop patio



4:30 PM

Head out to Wine Not Wednesday at the BVS tenant HUB and meet your neighbours

Bow Valley Square

Curated for work and life

OXFORD