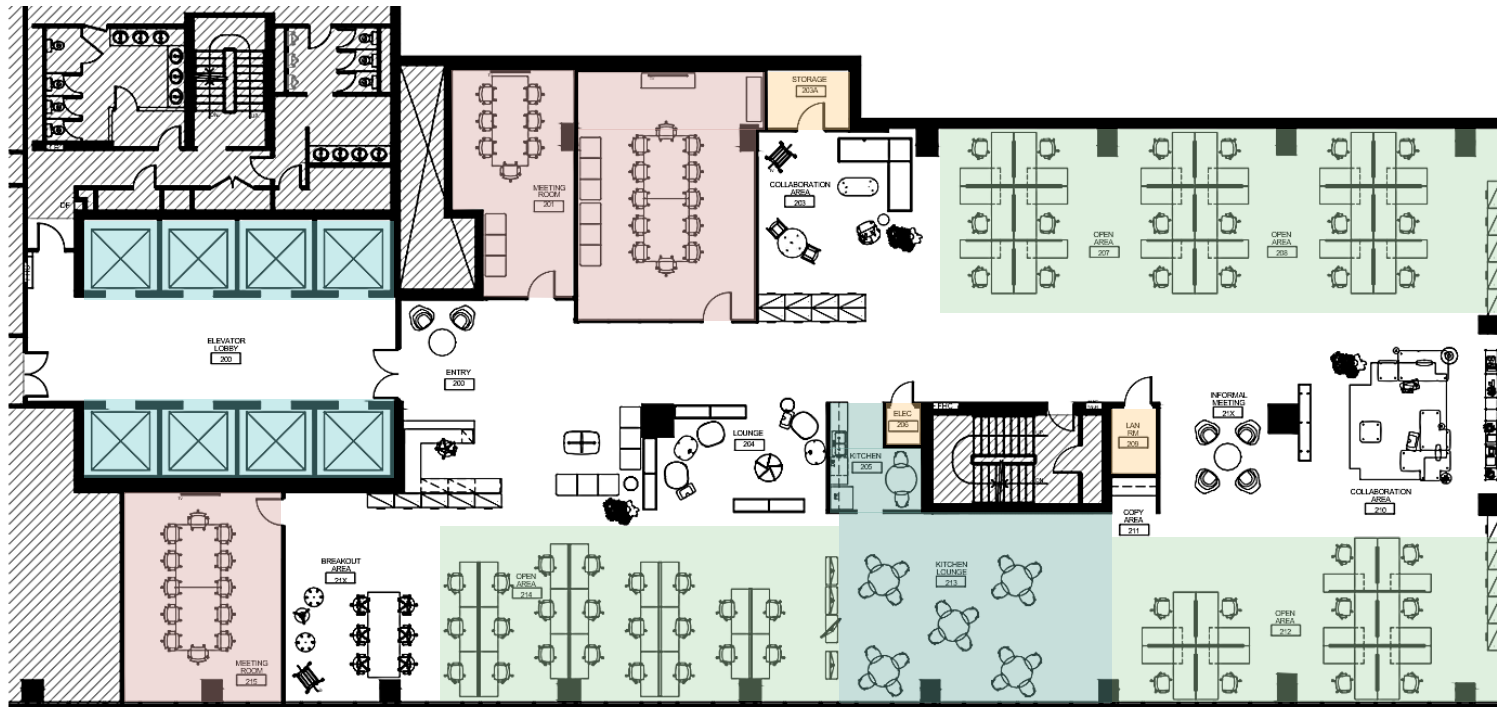


2180 Yonge Street

2nd Floor – Suite 200A – 9,523 SF



- Meeting Room
- Server/Storage Room
- Elevators
- Kitchen
- Open work area

Suite Features

- ✓ Available immediately
- ✓ Double door glass entry
- ✓ Reception area
- ✓ Boardroom
- ✓ Two meeting rooms
- ✓ Newly renovated central kitchenette
- ✓ Open area
- ✓ Fresh paint and carpet

