

YOUR FUTURE OFFICE

Leasing Opportunity at

OXFORD

Southcentre Executive Executive

Suite Details:

Tower
Southcentre Executive Tower

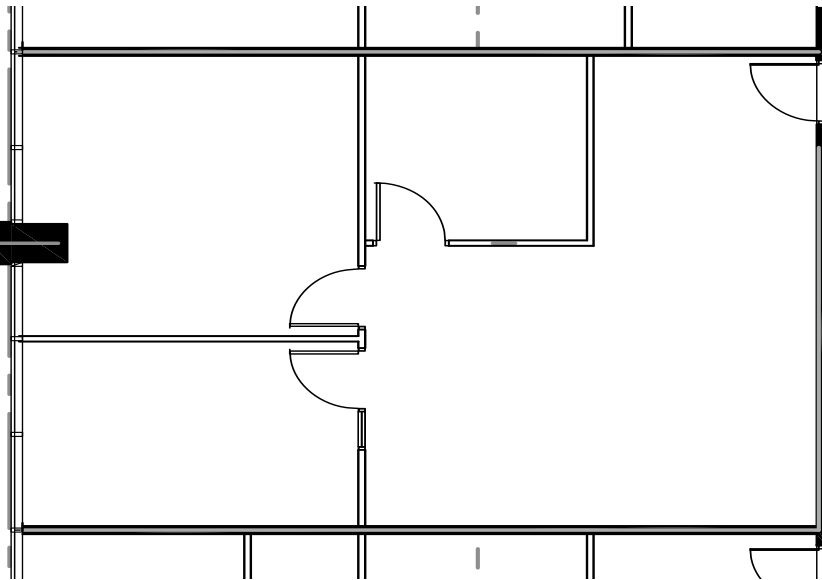
Suite Number
280

Square Footage
1,045

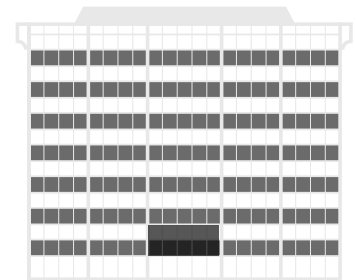
Further Information
[Southcentre Executive Tower Page](#)

Website
[OxfordProperties.com](#)

Suite Description
•3 offices
•Open area



Plan View of Your Suite,
Suite 280, Southcentre Executive Tower



Your Suite



Your Office Tower