

YOUR FUTURE OFFICE

Leasing Opportunity at

OXFORD

Southcentre Executive

Suite Details:

Tower

Southcentre Executive Tower

Suite Number

401

Square Footage

1,431

Further Information

[Southcentre Executive Tower Page](#)

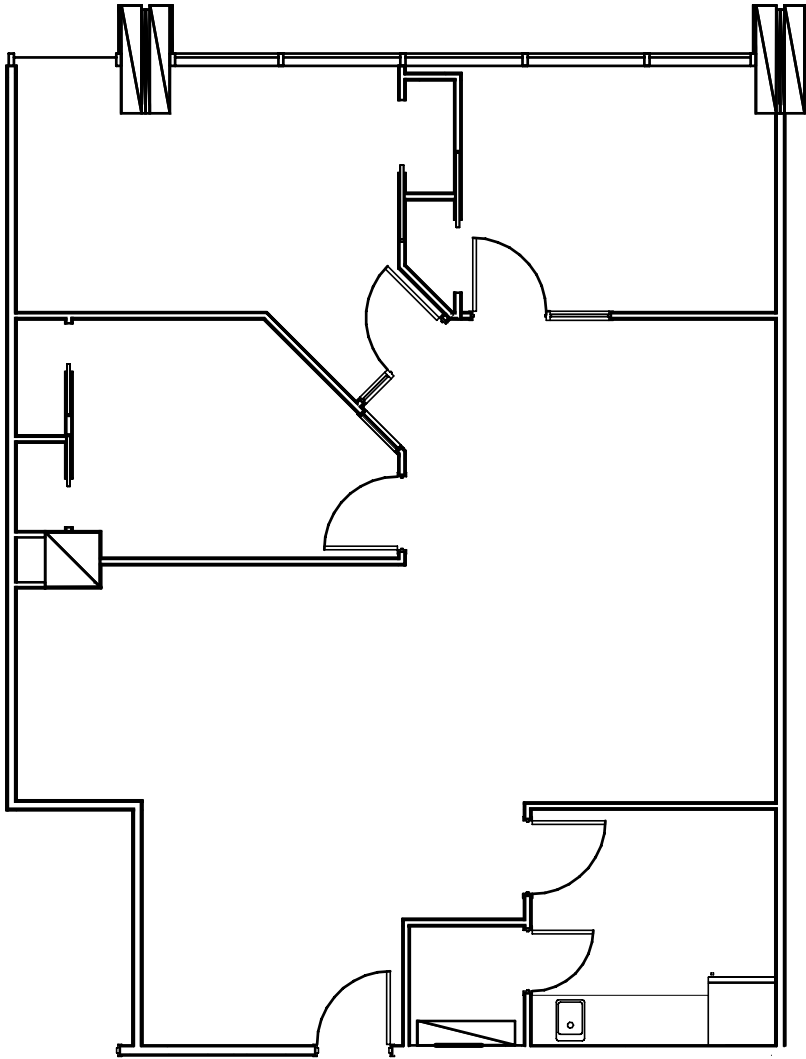
Website

OxfordProperties.com

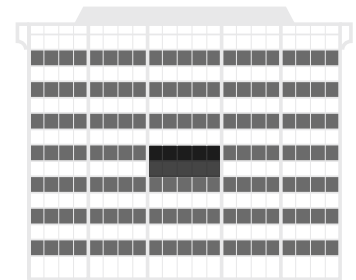
[Virtual Tour](#)

Suite Description

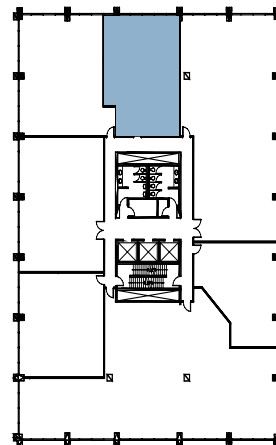
- 3 offices
- open area
- reception area
- kitchen and storage



Plan View of Your Suite,
Suite 401, Southcentre Executive Tower



Your Suite



Your Office Tower