

YOUR FUTURE OFFICE

Leasing Opportunity at

OXFORD

Southcentre Executive Executive

Suite Details:

Tower

Southcentre Executive Tower

Suite Number

750

Square Footage

7,167

Further Information

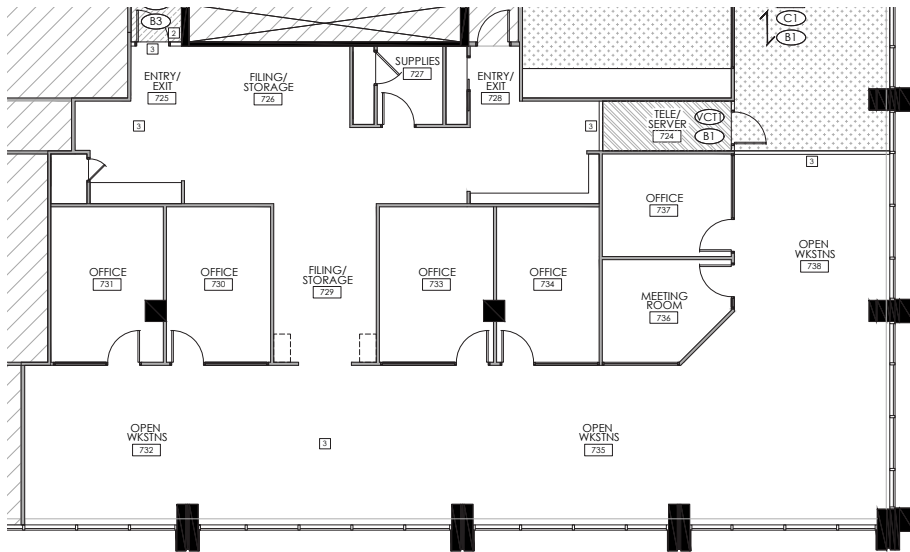
[Southcentre Executive Tower Page](#)

Website

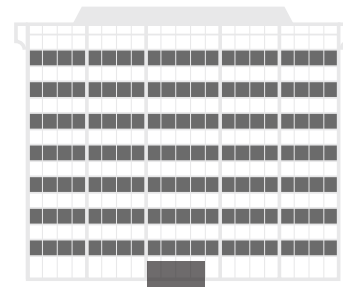
OxfordProperties.com

Suite Description

- new paint and carpet
- city views
- mix of open and office space
- fully furnished



Plan View of Your Suite,
Suite 750, Southcentre Executive Tower



Your Suite



Your Office Tower